

MakeApp Consulting AB

PR-2006-10-1

October 5, 2006

MakeApp Consulting AB announces MakeApp G4+

Jonkoping, Sweden – October 5, 2006 – MakeApp Consulting AB today announced that the development of an enhanced MakeApp generation is in progress.

MakeApp G4+ Status of development

Beta versions of products based on the new MakeApp G4+ has already been delivered to a number of component vendors.

The new development includes a new MakeApp kernel generation G4+, an easy to use product installation, and updated documentation.

MakeApp kernel G4+

Graphical user interface

- New “Live dialog” features has been added into the property dialogs. “Live dialog” features has been implemented on tab, group and line levels making it possible to enable/disable property depending on other settings.
- Info fields can be displayed in property dialogs.
- Links to PDF documents can be included in property dialogs.
- Read-only property fields displayed as disabled lines and can not be changed by user.
- Register/Variable bitfield modifications are directly logged during property configuration.
- Register browser window marks registers and bitfields that has been modified.
- A new MakeApp File Viewer is implemented.

Code generation

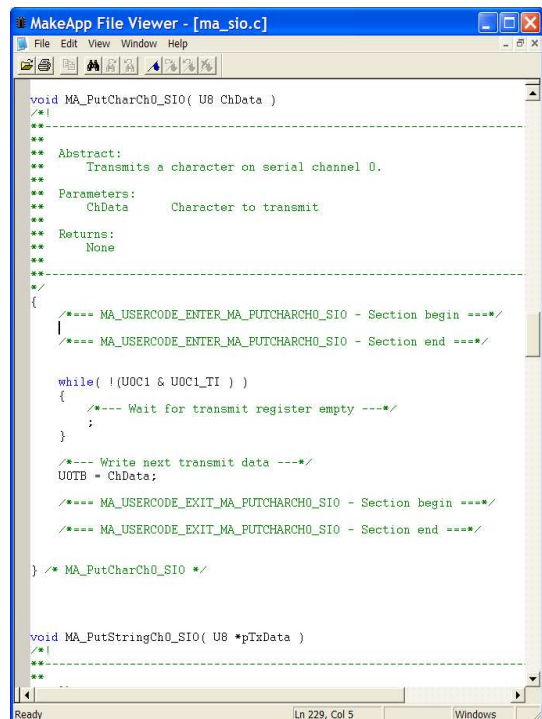
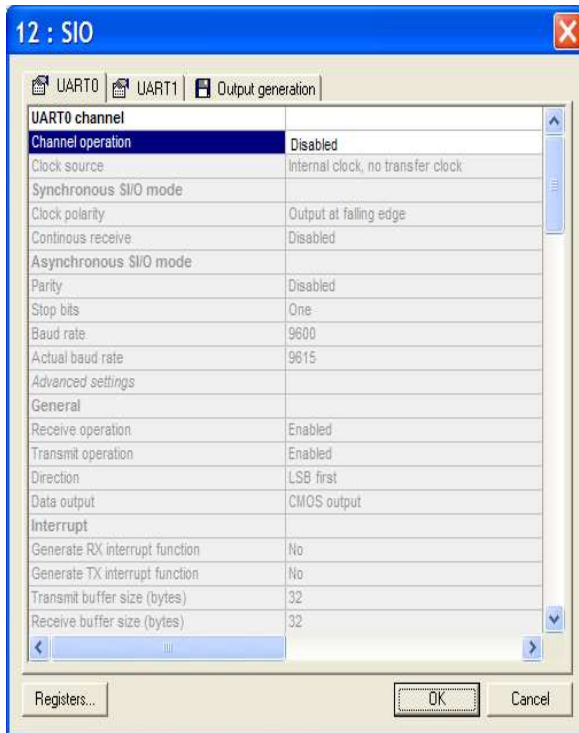
- New user code sections in device drivers has been added were end-user-code can be edited directly into file. These sections will not be overwritten if code is generated again.
- Possible to control the size of generated files depending on user settings.
Example1: C and H-files only generated if the module is configured to be used.
Example2: Only Init functions are generated if not "run-time function generation" is enabled.

Easy product installation

- Easy installation of the products without any registration requirement and license key handling is available for component vendors who wants to license FREE distribution of their MakeApp products.
- Product documentation files can be opened directly from Windows start menu.

Updated documentation

- Doxygen documentation software can be used to create a "MakeApp Drivers API reference guide". This HTML document includes documentation of the device drivers for the supported components.
- New readme files.



We would like to get your ideas

Let us know what you want to be included in the next generation of the MakeApp Configuration and Code generation tool. Send your request and suggestions to info@makeapp.se

Evert Johansson
 Product Manager – MakeApp
 MakeApp Consulting AB
evert.johansson@makeapp.se
<http://www.makeapp.se>